

Mounting Instructions Foton 404 Spirit SL-20 Front End Loader



Spirit Implements, LLC.
850 Bowling Lane
Waupaca, WI 54981
866-533-5536

- (1) Begin by unpacking the loader mounts and pail from the pallet.
- (2) Identify The Right and Left Front Mount
- (3) Identify the Right and Left Mid Mount



LEFT



RIGHT

- (4) Identify the Axle Support Bars “Torsion Bars”
- (5) Identify the mid mount Spanner Bar

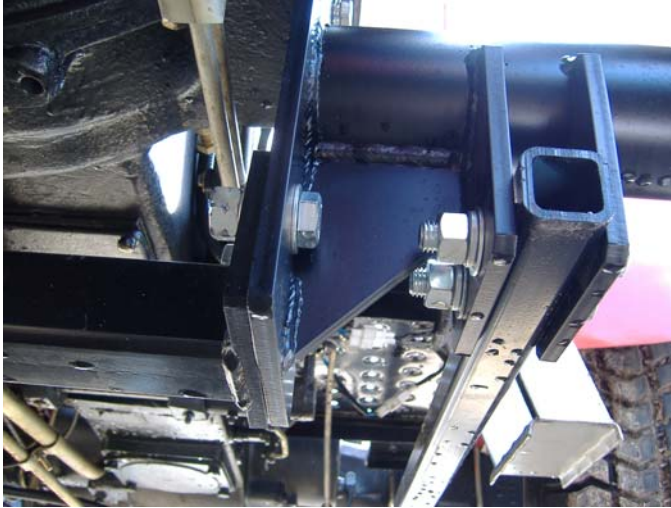


- (6) Identify the valve bracket
- (7) Identify the muffler relocation pipe.



- (8) Open the pail and identify the nuts and bolts packed individually in the pail. The valve comes with the fittings screwed into the valve loosely. You will need to tighten all fittings after the installation of the loader and prior to any operation.
- (9) Identify the front mount “Clips” inside your pail
- (10) Mount the right and left front mount with the hardware provided. Depending on your configuration from the factory, the front hole covers on your tractor (located on the battery box) may need to be removed to uncover the threaded holes.
- (11) Remove the step from the Left side of the tractor. Continue by removing the flywheel inspection covers. These should be attached by 4-6 bolts on each side of the tractor. Remove the bolts on the mid mounts that support the hood at this time. The mid mount inspection covers are no longer needed for installation.
- (12) Attach the left and Right side mid mounts by using the hardware provided. At this time, do not torque bolts as a snug fit is fine for ensuring alignment.

- (13) The torsion bars will be the next items to install. Remove the rear sway bar pins from the rear axle. The rear torsion bar brackets will go over the rear axle square tube and be fastened with the large bolts provided. Insert the long bolts through the torsion bars, rear axle square tubing, and sway bars that are attached to the lower three point arms. Loosely attach the hex nuts and lockwashers provided.



- (14) Attach the front of the rear axle support bars into the mid mounts. Run the bolts from the outside of the mid mounts, through the support bar holes and leave flush with the inside of the mid mount bracket.
- (15) Place the mid mount spanner bar in place and continue pushing the bolts used in step (12) above through the attachment plate on the spanner bar. Loosely attach the nuts and lock washers to the inside of the spanner bar mating plate.
- (16) Attach the left step onto the holes provided in the left mid mount bracket. The holes for the step on the mid mount bracket should allow for minor adjustment of the step to ensure it is aligned with the deck of the tractor.
- (17) Attach the muffler relocation pipe to the tractor. This mounts with the included hardware.

- (18) Attach the valve bracket onto the right mid mount. Hardware is provided for this attachment. These fasteners may be torqued to the recommended specifications at this time.
- (19) Attach valve onto the top of the valve bracket using the included hardware. The valve bracket holes are slotted to allow minor adjustment of the valve. The valve can be rotated approx 15 degrees for operator comfort. The valve should be attached with the handle up and the hoses facing the outside of the tractor.
- (20) The valve attaches to the 404 Foton very easily. There are two silver fittings included in your fitting kit that are a 10JIC x 14mm compression. Usually these fittings are already threaded into your valve assembly at the end of the hoses marked “Pump” and “Power Beyond” on the included picture. Identify the pressure line coming from your hydraulic pump. Remove the section of hard line in the middle of the pressure line. This section of hard line can be removed by loosening the compression fittings. You will attach one silver fitting to each end of the remaining hard line. The hard line that you removed is no longer needed in this installation.



- (21) Attach the hose from the attached Valve picture diagram marked “PUMP” to the silver fitting closest to the pump. The hose from the valve picture marked

“Power Beyond” will attach to the other silver compression fitting furthest from the pump.

- (22) The “Return to tank” hose on the included picture is attached to the tractor at the rear right hand side of the hydraulic reservoir. Standing at the rear of the tractor, you can identify this return port on the hydraulic reservoir as being on the lower right hand side of the reservoir, near the rear of the tractor, facing the fender, and has a hex head bolt plug in it. This plug is currently the drain plug for the hydraulic system. Route the hose from the valve, to the torsion bar and up between the right footstep (if included with your tractor) and the axle. Use the included nylon cable ties to attach this hose to your torsion bars.



- (23) After all components are in place and before loader is set in place, torque all bolts in accordance with the torque chart included with this manual. **Double check all torques with a calibrated torque wrench. It is an important safety consideration that the fasteners are torqued properly and rechecked frequently. Failure to do so will void the manufacturer warranty and may cause a mechanical failure causing injury or death to the operator or those around the machine.**
- (24) Unpack the loader bucket from the pallet. This will require at least two sets of hands. Handle this loader bucket with a hoist or other mechanical lifting device. The weight of the loader bucket, depending on size, can be as much as 250#.
- (25) Using a hoist, or other mechanical means – unband the loader frame from the pallet and gently set on the ground. Use care to not damage the loader, and also to lift, carry, and move with SAFETY in mind.
- (26) Lift the loader onto the mid and front mounts of the tractor. Have the mid mount attachment pins ready. Place the mid mount pins through the outside of the bracket, through the loader upright bushing, and inside of the midmount bracket. Place cotter pin through the hole on the inside of the midmount pin.
- (27) Loosely snug the saddle bolts into the mid mounts. This will require a 1-1/8” wrench or socket.
- (28) Locate the front “clips” identified in step #9 above. Place clip on the outside of the front rail with the opening facing the operator. Place as far back onto the front mount tube as possible and attach to the loader using included hardware. Torque these down on the left and right side immediately. Note: The

- left and right sides should be identical as far as which hole they are mounted into and the spacing on the slotted hole on the clip itself. If they are not – check each right and left side mid mount and find the problem. Correct and continue.
- (29) Now torque down the saddle bolts on the loader upright. This will draw the loader further back into the saddles and will also tighten the front mount clips onto the front mount tubes. It is very important again to make sure everything is tightened properly and that the front clips are fully engaged onto the front mount tubes. If the front mount clips are not fully engaged, they will be bent by operation and will need to be replaced. This loader is not a pedestal mount and therefore careful installation of the front loader mounts and front loader clips is essential to proper operation of the loader.
- (30) Unscrew the hard line plastic caps from the end of each hard line. This will allow the loader to move relatively freely. Attach the bucket using the pins and bolts provided. The pins are tapered for an easy fit, but usually a rawhide hammer must be used to place the pins properly. Place the small bolts through the bushings on the bucket after the pins are installed.
- (31) The four loader control hoses attached to the valve are color coded as are the hard lines on the loader. Attach the Red to Red, Blue to Blue, etc... If a protective hose wrap is included with your kit – install it prior to attaching the hoses on your loader. The hoses will route from the valve, inside the right upright, to the SAE fittings on your hard lines.
- (32) Check all torques again. Check front clip engagement on the front mounts. Check all hydraulic fittings to ensure they are tight. Check hoses and all connections. Check quick connects for proper engagement.
- (33) Start tractor and operate loader cycling loader, and adding hydraulic oil to the reservoir continuously until all air is worked from the system. If your loader has a small reservoir, and you cannot remove all air from the system you will need the auxiliary hydraulic reservoir kit available from Foton.

Comments on how we can make your installation better? Toll Free 866-533-5536.

READ AND UNDERSTAND THE OPERATION MANUAL PRIOR TO USE.



RETURN
TO
TANK

Power
Beyond

Pump